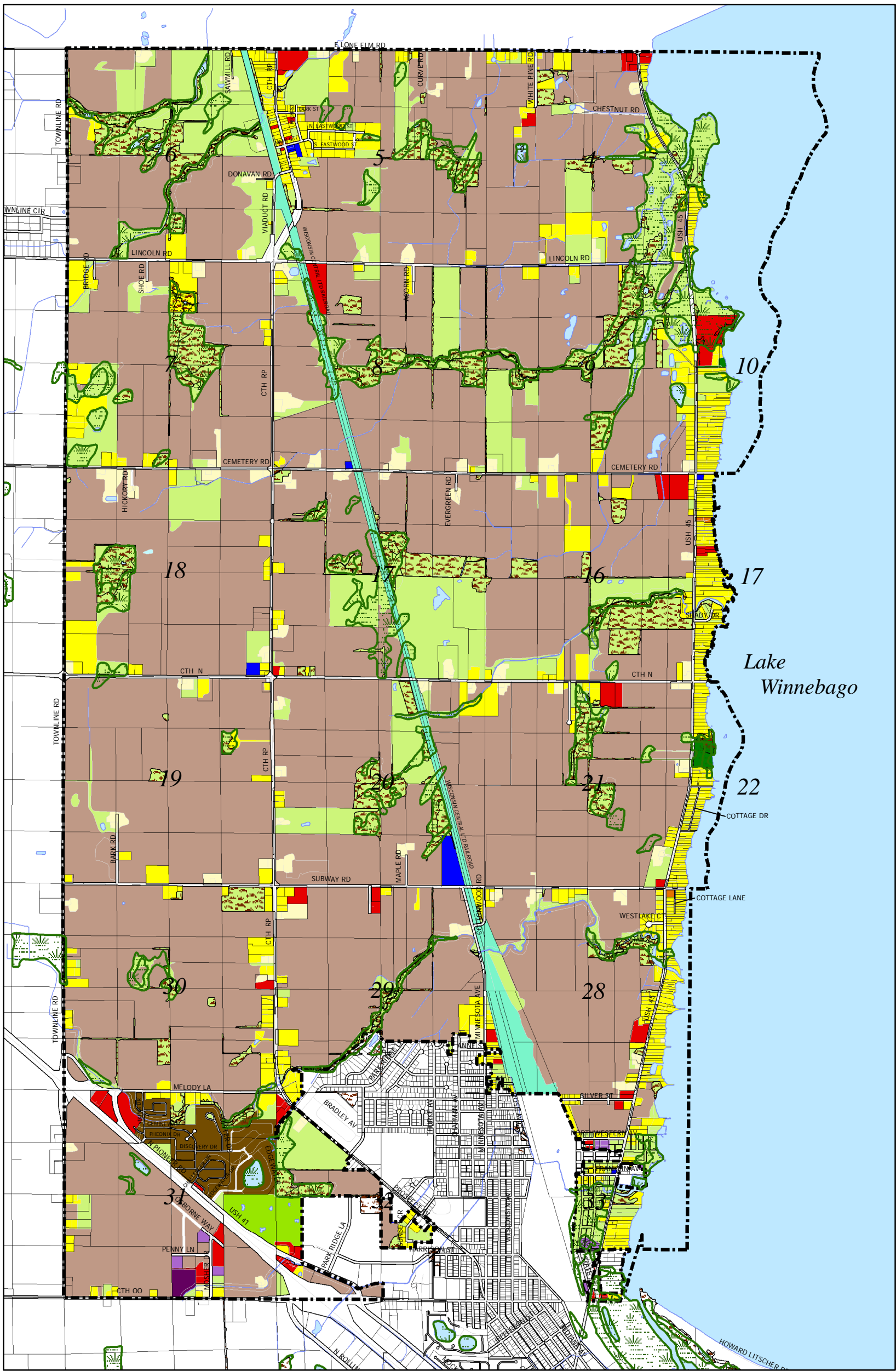


Town of Friendship

Existing Land Use



- Land Use Categories
- Farmsteads
 - Single Family Residential
 - Multi-Family
 - Mobile Home Parks
 - Commercial
 - Industrial
 - Quarries
 - Institutional Facilities
 - Rail Transportation
 - Utilities/Communications
 - Agricultural Land / Pasture
 - Water Features
 - Recreational Facilities
 - Open Land
- Coverages
- Wetlands
 - Woodlands
- Town Limits

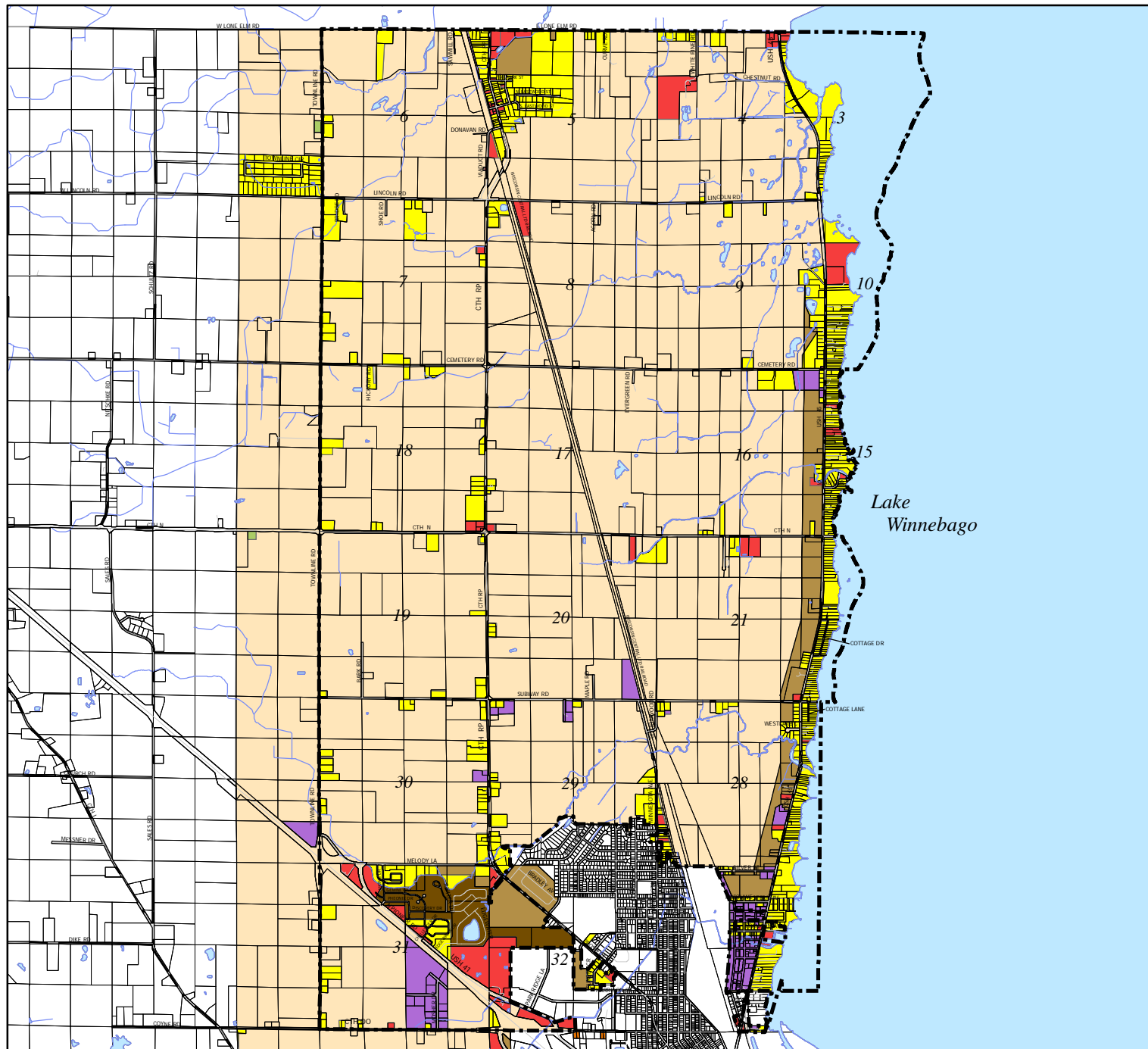
Map 2 Town of Friendship Zoning



Legend

Districts

- Residential
- Residential Medium Density
- Mobile Home
- Rural
- Agricultural Transitional
- Exclusive Agricultural
- Commercial
- Industrial



The base map data was created by Fond du Lac County Planning Department, who assumes no liability for the accuracy of this data or any use or misuse of its content. Changes were made by Martenson and Eisele, Inc. under the direction of the Town of Friendship.

Martenson & Eisele, Inc.

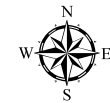


1377 Midway Road
Menasha, WI 54952
www.martenson-eisele.com
info@martenson-eisele.com
920.731.0381 1.800.236.0381

Planning
Environmental
Surveying
Engineering
Architecture

pnarcgis331927gis.mxd_02/12/09

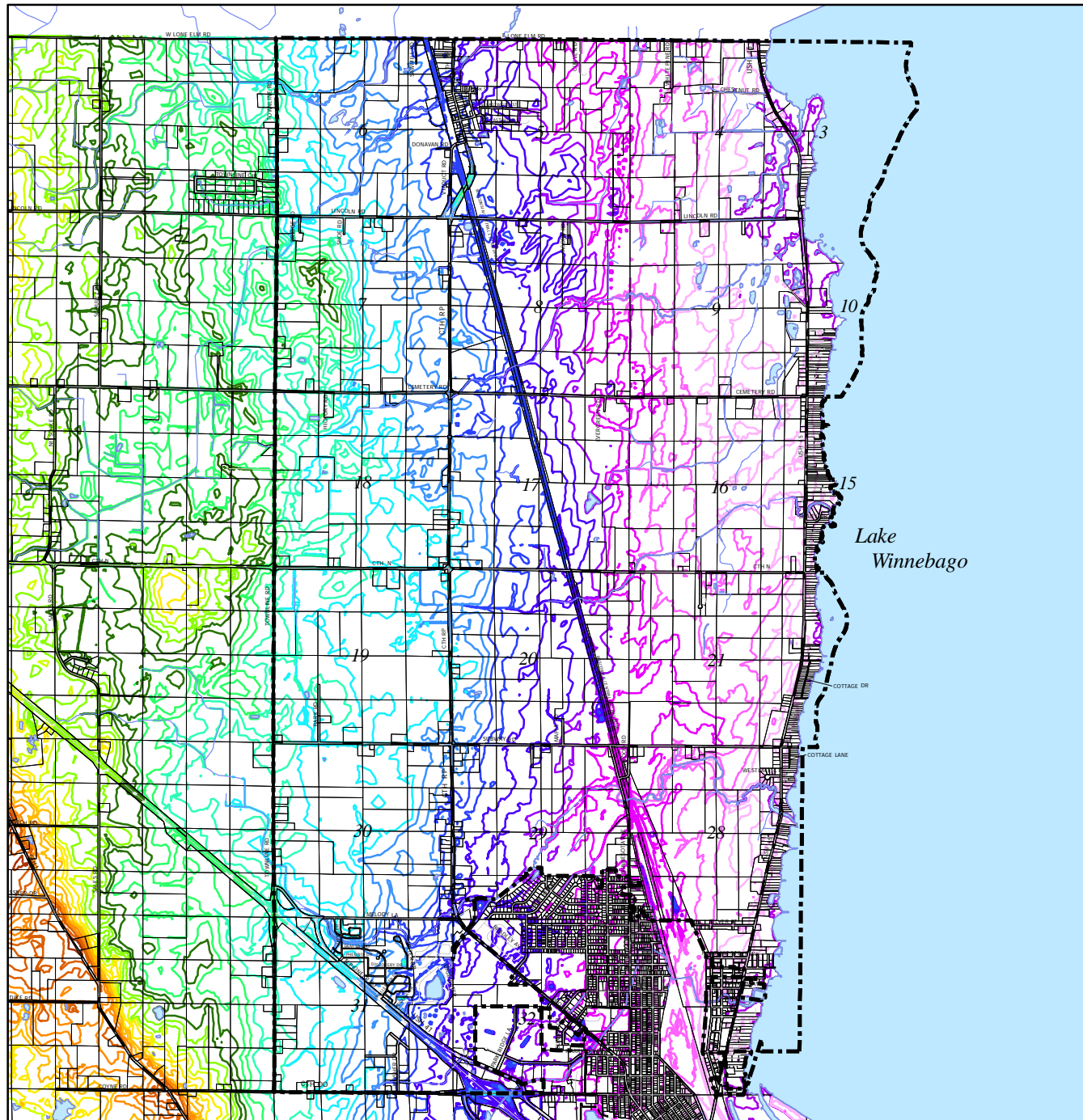
Map 3 Town of Friendship Topography



Legend

Elevation

748.000
748.001 - 756.000
756.001 - 764.000
764.001 - 772.000
772.001 - 776.000
776.001 - 784.000
784.001 - 792.000
792.001 - 800.000
800.001 - 808.000
808.001 - 816.000
816.001 - 824.000
824.001 - 832.000
832.001 - 840.000
840.001 - 844.000
844.001 - 852.000
852.001 - 860.000
860.001 - 868.000
868.001 - 876.000
876.001 - 884.000
884.001 - 892.000



The base map data was created by Fond du Lac County Planning Department, who assumes no liability for the accuracy of this data or any use or misuse of its content. Changes were made by Martenson and Eisele, Inc. under the direction of the Town of Friendship.

Martenson & Eisele, Inc.



1377 Midway Road
Menasha, WI 54952
www.martenson-eisele.com
info@martenson-eisele.com
920.731.0381 1.800.236.0381

Planning
Environmental
Surveying
Engineering
Architecture

Map 4

Town of Friendship

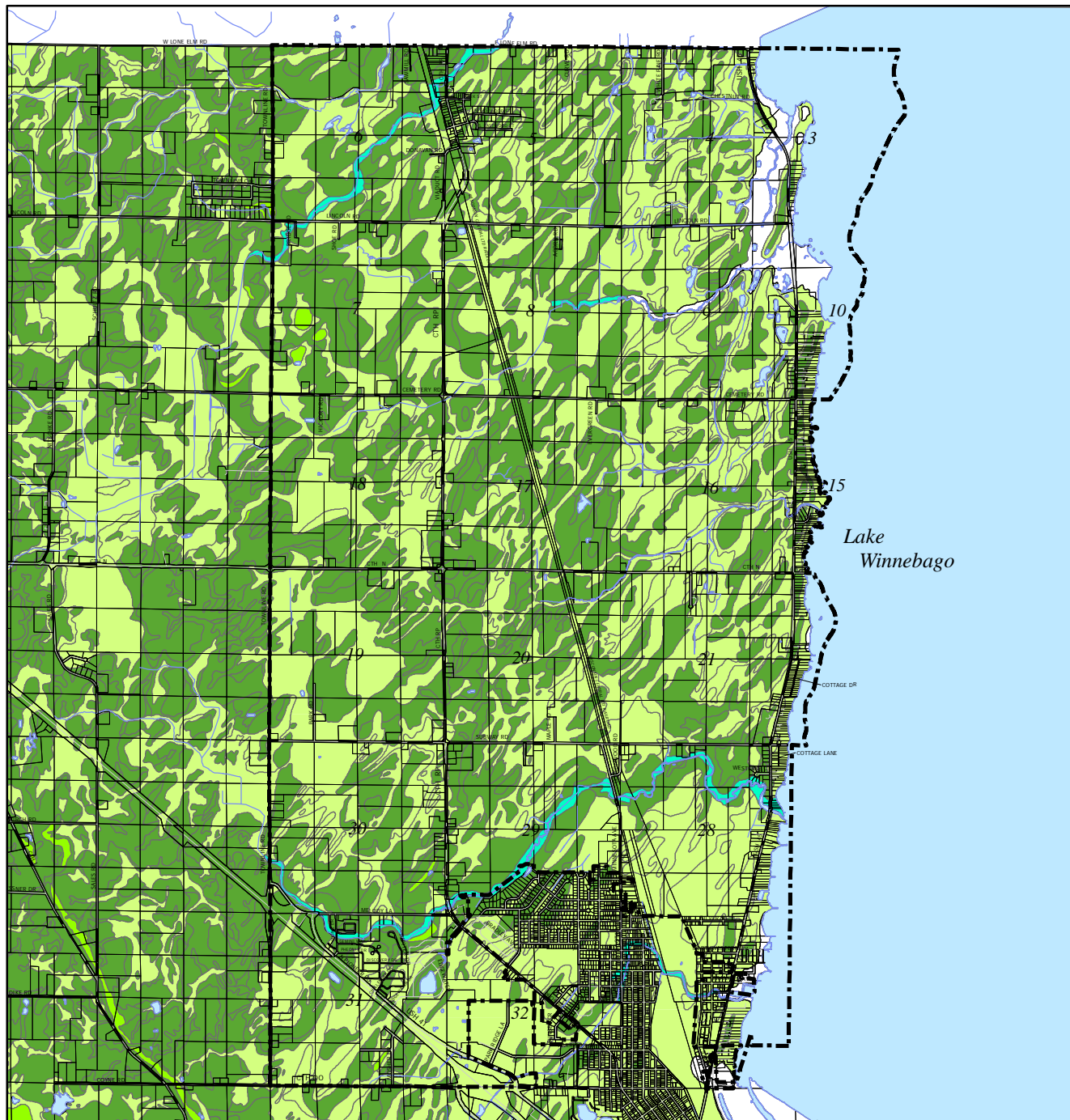
Prime Farmland



Legend

Classifications

- All areas are prime farmland
- Farmland of statewide importance
- Prime farmland if drained
- Prime farmland if protected from flooding or not frequently flooded during the growing season
- Not prime farmland



Soil Data extracted from Standard State Soil Survey Database as provided by the USDA Natural Resources Conservation Service and it is the best available information and is not field verified.

The base map data was created by Fond du Lac County Planning Department, who assumes no liability for the accuracy of this data or any use or misuse of its content. Changes were made by Martenson and Eisele, Inc. under the direction of the Town of Friendship.

Martenson & Eisele, Inc.

1377 Midway Road
Menasha, WI 54952
www.martenson-eisele.com
info@martenson-eisele.com
920.731.0381 1.800.236.0381

Planning
Environmental
Surveying
Engineering
Architecture

Map 5

Town of Friendship

Soil Limitations for Dwellings with Basements



Legend

- Not rated
- Somewhat limited
- Very limited

Somewhat Limited: the soil has features that are moderately favorable for the specified use. The limitations can be overcome or minimized by special planning, design, or installation. Fair performance and moderate maintenance can be expected.

Very Limited: soil has one or more features that are unfavorable for the specified use. The limitations generally cannot be overcome without major soil reclamation, special design, or expensive installation procedures. Poor performance and high maintenance can be expected.

Soil Data extracted from Standard State Soil Survey Database as provided by the USDA Natural Resources Conservation Service and it is the best available information and is not field verified.

The base map data was created by Fond du Lac County Planning Department, who assumes no liability for the accuracy of this data or any use or misuse of its content. Changes were made by Martenson and Eisele, Inc. under the direction of the Town of Friendship.

Martenson & Eisele, Inc.

1377 Midway Road
Menasha, WI 54952
www.martenson-eisele.com
info@martenson-eisele.com
920.731.0381 1.800.236.0381

Planning
Environmental
Surveying
Engineering
Architecture